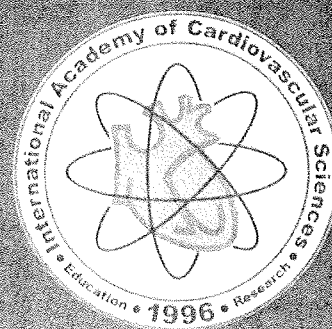
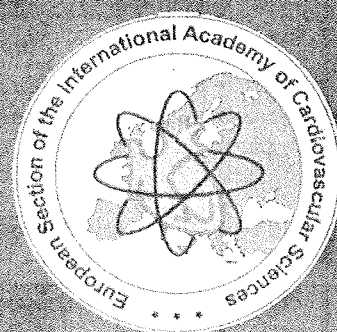


**2<sup>ND</sup> EUROPEAN SECTION MEETING OF THE  
INTERNATIONAL ACADEMY OF CARDIOVASCULAR SCIENCES**

**"HEART DISEASES: HOW NEW RESEARCH  
MAY LEAD TO NEW TREATMENTS"**



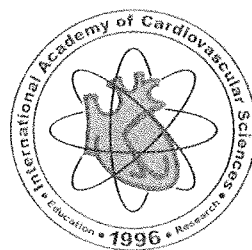
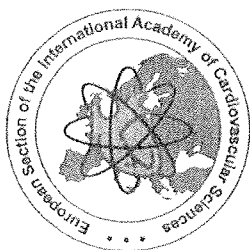
**Organized by the  
*International Academy of Cardiovascular Sciences - European Section***

**ABSTRACT BOOK WITH FINAL PROGRAM**

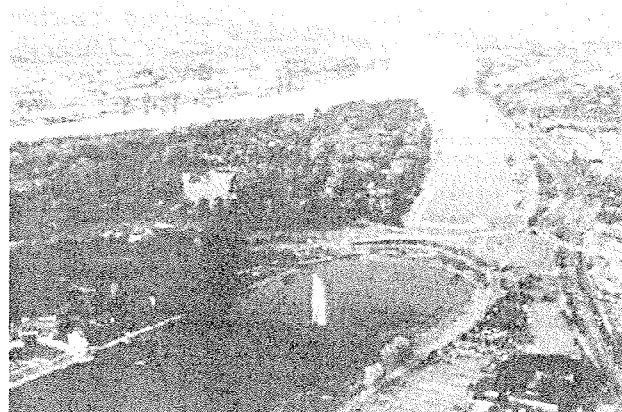
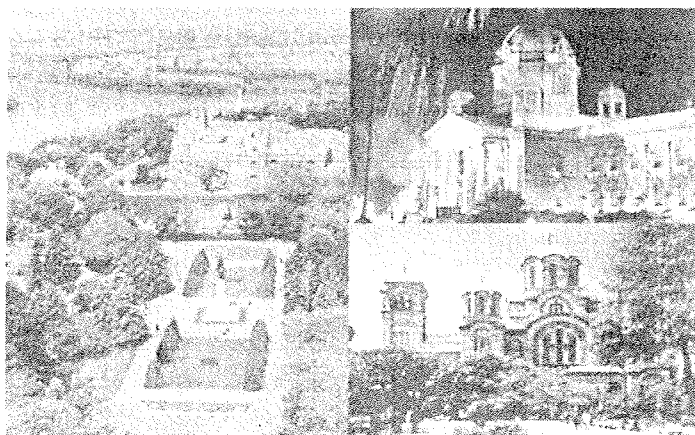
**Venue: Hotel Crowne Plaza, Belgrade, Serbia  
Date: October 8th – 10th, 2015**

2<sup>ND</sup> EUROPEAN SECTION MEETING OF THE  
INTERNATIONAL ACADEMY OF CARDIOVASCULAR SCIENCES

**"HEART DISEASES: HOW NEW RESEARCH  
MAY LEAD TO NEW TREATMENTS"**



Organized by the  
*International Academy of Cardiovascular Sciences - European Section*



**ABSTRACT BOOK WITH FINAL PROGRAM**

Venue: Hotel Crowne Plaza, Belgrade, Serbia  
Date: October 8th – 10th, 2015

<http://www.heartacademy.org/>  
<http://www.iacs.sav.sk/>

### ***Meeting Co-Chairs***

**Djuric Dragan**, Belgrade, Serbia

**Jakovljevic Vladimir**, Kragujevac, Serbia

### ***Honorary Co-Chairs***

**Dhalla Naranjan**, Winnipeg, Canada

**Varro Andras**, Szeged, Hungary

### ***International Program Committee***

**Agrawal Devendra**, Creighton, USA

**Ambrosio Giuseppe**, Perugia, Italy

**Bartekova Monika**, Bratislava, Slovakia

**Baczko Istvan**, Szeged, Hungary

**Beltowski Jerzy**, Lublin, Poland

**Ferdinandy Peter**, Budapest, Hungary

**Gallyas Ferenc**, Pecs, Hungary

**Hasebe Hiroaki**, New York, USA

**Hildebrandt Wulf**, Marburg, Germany

**Jost Norbert**, Szeged, Hungary

**Kinscherf Ralph**, Marburg, Germany

**Kjeldsen Keld**, Copenhagen, Denmark

**Kulchitsky Vladimir**, Minsk, Belarus

**Lazou Antigona**, Thessaloniki, Greece

**Lionetti Vincenzo**, Pisa, Italy

**Lopatina Ekaterina**, St. Petersburg, Russia

**Muntean Danina**, Timisoara, Romania

**Ostadal Bohuslav**, Prague, Czech Republic

**Ostadal Petr**, Prague, Czech Republic

**Papp Zoltan**, Debrecen, Hungary

**Pechanova Olga**, Bratislava, Slovakia

**Pierce Grant**, Winnipeg, Canada

**Ravingerova Tatiana**, Bratislava, Slovakia

**Slezak Jan**, Bratislava, Slovakia

**Szamosi Tamas**, Budapest, Hungary

**Turan Belma**, Ankara, Turkey

**Tyagi Suresh**, Louisville, USA

**Vegh Agnes**, Szeged, Hungary

### ***Local CME Committee***

**Beljić Živković Teodora**, Belgrade, Serbia

**Deljanin Ilić Marina**, Niš, Serbia

**Djurić Dušan**, Kragujevac, Serbia

**Lazović Milica**, Belgrade, Serbia

**Novaković Budimka**, Novi Sad, Serbia

**Radonjić Vesela**, Belgrade, Serbia

**Stojkov Svetlana**, Belgrade, Serbia

**Tasić Nebojša**, Belgrade, Serbia

**Trifunović Zoran**, Belgrade, Serbia

### ***Local Organizing Secretariat***

**Jeremić Nevena**, Kragujevac, Serbia

**Srejović Ivan**, Kragujevac, Serbia

**Stojić Isidora**, Kragujevac, Serbia

**Živković Vladimir**, Kragujevac, Serbia

\*Surnames are listed in alphabetical order.

## IMPACT OF ANEMIA ON ONE-YEAR SURVIVAL IN PATIENTS WITH ISCHEMIC STROKE

Ilić M, Jakovljević V, Ilić I, Todorović Ž, Jovanović M, Tončev G

*Faculty of Medical Sciences, University of Kragujevac, Kragujevac, Serbia*

Anemia is an established risk factor in heart disease, but only a few studies have focused on the relationship between stroke and anemia. This study evaluates the effect of anemia on outcome in patients with ischemic stroke. A retrospective, observational, cohort study of prospectively collected data was undertaken on 327 consecutive patients with ischemic stroke between January-June 2010 in Department of Neurology of Clinical Centre Kragujevac. The primary end point was mortality, defined as any death occurring within one year of occurrence of stroke. The Kaplan-Meier method was used to estimate the cumulative survival rates. The predictive value of anemia for the one-year survival rates was assessed using the Cox proportional-hazards regression model. The cumulative one-year survival rate of ischemic stroke patients was 53.2% (58.2% in men and 48.1% in women). In total 57 (17.6%) patients with ischemic stroke suffered anemia. Anemia was a significant predictor of one-year mortality in our cohort (Hazard Ratio = 1.72, 95% Confidence Intervals = 1.17 – 2.51,  $P = 0.0052$ ). There was a significant difference between the anemic and non-anemic patients with ischemic stroke in the risk of death according to gender: anemia was a significant predictor of dying throughout the first year after a stroke in men ( $P = 0.0480$ ), but not in women ( $P = 0.2230$ ). In patients with ischemic stroke, anemia is associated with an increased risk of mortality.